



# Secretin Receptor Polyclonal Antibody

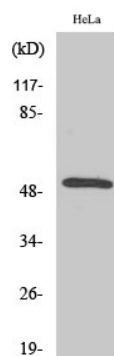
|                                  |   |
|----------------------------------|---|
| <b>Catalog No</b>                | YP-Ab-13673   |
| <b>Isotype</b>                   | IgG   |
| <b>Reactivity</b>                | Human;Rat;Mouse;  |
| <b>Applications</b>              | WB;IHC;IF;ELISA   |
| <b>Gene Name</b>                 | SCTR  |
| <b>Protein Name</b>              | Secretin receptor   |
| <b>Immunogen</b>                 | The antiserum was produced against synthesized peptide derived from human SCTR. AA range:100-149  |
| <b>Specificity</b>               | Secretin Receptor Polyclonal Antibody detects endogenous levels of Secretin Receptor protein.   |
| <b>Formulation</b>               | Liquid in PBS containing 50% glycerol, 0.5% BSA and 0.02% sodium azide.   |
| <b>Source</b>                    | Polyclonal, Rabbit,IgG  |
| <b>Purification</b>              | The antibody was affinity-purified from rabbit antiserum by affinity-chromatography using epitope-specific immunogen.   |
| <b>Dilution</b>                  | Western Blot: 1/500 - 1/2000. Immunohistochemistry: 1/100 - 1/300. Immunofluorescence: 1/200 - 1/1000. ELISA: 1/20000. Not yet tested in other applications.  |
| <b>Concentration</b>             | 1 mg/ml   |
| <b>Purity</b>                    | ≥90%  |
| <b>Storage Stability</b>         | -20°C/1 year  |
| <b>Synonyms</b>                  | SCTR; Secretin receptor; SCT-R  |
| <b>Observed Band</b>             | 48kD  |
| <b>Cell Pathway</b>              | Cell membrane ; Multi-pass membrane protein .   |
| <b>Tissue Specificity</b>        | Brain,Kidney,Lung,Pancreas,   |
| <b>Function</b>                  | function:This is a receptor for secretin. The activity of this receptor is mediated by G proteins which activate adenylyl cyclase.,similarity:Belongs to the G-protein coupled receptor 2 family.,  |
| <b>Background</b>                | secretin receptor(SCTR) Homo sapiens The protein encoded by this gene is a G protein-coupled receptor and belongs to the glucagon-VIP-secretin receptor family. It binds secretin which is the most potent regulator of pancreatic bicarbonate, electrolyte and volume secretion. Secretin and its receptor are suggested to be involved in pancreatic cancer and autism. [provided by RefSeq, Jul 2008], |
| <b>matters needing attention</b> | Avoid repeated freezing and thawing!  |



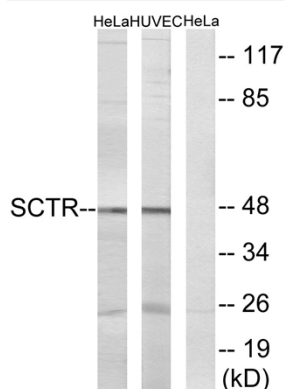
## Usage suggestions

This product can be used in immunological reaction related experiments. For more information, please consult technical personnel.

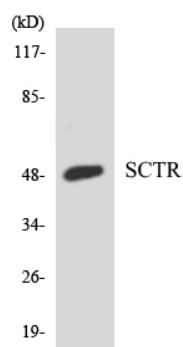
## Products Images



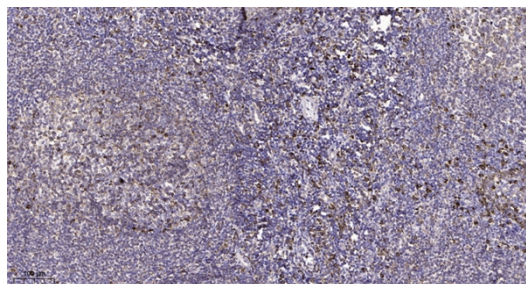
Western Blot analysis of various cells using Secretin Receptor Polyclonal Antibody diluted at 1:1000



Western blot analysis of lysates from HeLa and HUVEC cells, using SCTR Antibody. The lane on the right is blocked with the synthesized peptide.



Western blot analysis of the lysates from HeLa cells using SCTR antibody.



Immunohistochemical analysis of paraffin-embedded human tonsil. 1, Antibody was diluted at 1:200(4° overnight). 2, Tris-EDTA,pH9.0 was used for antigen retrieval. 3,Secondary antibody was diluted at 1:200(room temperature, 45min).